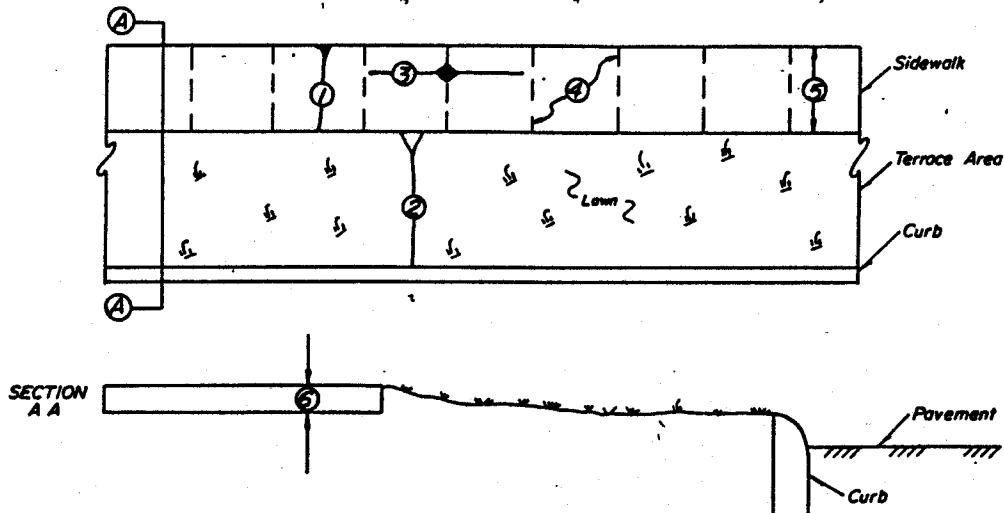


CITY OF DEFIANCE, OHIO
ENGINEERING DEPARTMENT



- 1) Transverse slope shall not normally be more than 1/4" per foot. In no case shall the transverse slope exceed 5/8" per foot.
- 2) Transverse slope over the terrace area shall not be more than 3/4" per foot. Variances must be approved by the City Engineer.
- 3) The maximum longitudinal slope shall be 1" per foot. Variances must be approved by the City Engineer.
- 4) There shall be contraction joints at intervals equal to the width of the sidewalk or as directed by the City Engineer. (Concrete walks only)
- 5) The sidewalk shall be a minimum of 4' in width, however, the sidewalk shall be constructed to the same width as the existing adjacent sidewalk on each side. Variances to this provision may be made only with the approval of the City Engineer.
- 6) Sidewalk depth shall be a minimum of 4" except when the sidewalk is part of a driveway, where the depth shall be a minimum of 6".
- 7) 1/2" expansion joint material shall be placed at property lines and around obstructions such as trees and poles. It should also be placed at driveways and along the curb line where the sidewalk is adjacent to the curb, and at intervals not to exceed 100'. (Concrete walks only.)
- 8) Sidewalks shall be constructed following the Ohio Department of Transportation Construction & Material Specifications Item 608 current edition.
- 9) Sidewalk forms must be inspected by the Engineering Div. or Building Inspection Div. before the concrete is poured. The inspector should be notified 24 hrs. prior to installation.

Grades are to be provided by the City Engineering Department when determined necessary by the Engineer.

Where tree roots have caused damage to the existing sidewalk, it is the obligation of the property owner to contact either the City Engineering Div. or the Parks and Recreation Div. to determine whether or not the roots can be cut sufficiently without causing permanent damage to the tree.

When tree roots have been permitted to be cut, the affected roots must be covered with an approved asphalt based paint, such as "Tree Cote".

STANDARD DRAWING		
SIDEWALK DETAIL		
CITY ENGINEER	DRAWN BY	DATE
GAYLON L. DAVIS	S. J. K.	3-83
REVISIONS		